

# 30 m Crew Cargo Catamaran - NEPTUNE 2



2 of 2 Crew/Cargo 30m vessel to operate in the the Persian Gulf.

## Specifications

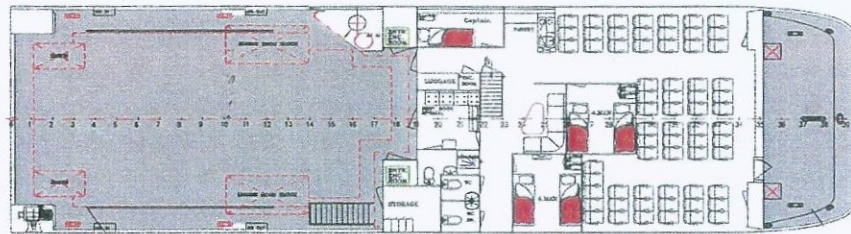
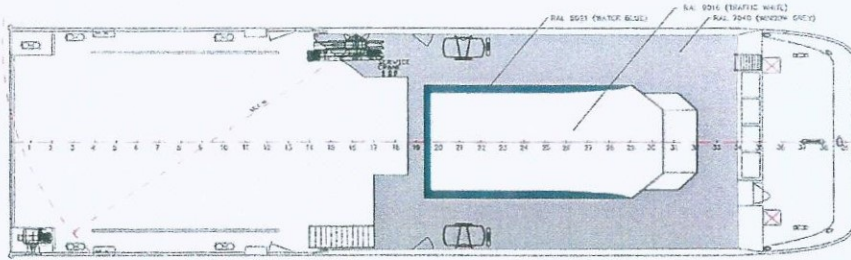
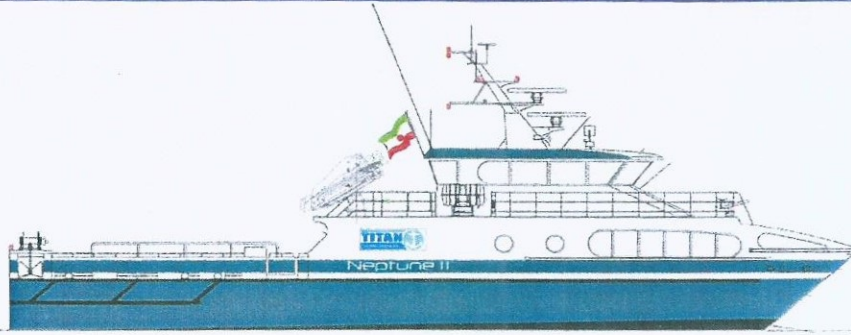
- **Type of vessel:** Crew Cargo Catamaran
- **Design:** Båtservice Mandal Verft AS - Ola Lilloe Olsen
- **Client:** Titan Marine Kish
- **Building material:** Aluminium Alloy
- **Lenght overall:** 29,65m
- **Draft:** 1,80m
- **Speed:** 30 knots
- **Fuel tank:** 6000 L
- **Main engine:** 2 x 12V NTU 2000 M72
- **Yard No:** 94
- **Beam:** 9m
- **Crew:** 3
- **Seats:** 65
- **Communications:** GMDSS A1 + A2
- **El. System:** 380v, 3PH, 50Hz-65kva x 2
- **Aux.Engine:** 2 x John Deer 4045 FM 57 kW
- **Gear:** ZF 3050
- **Cargo:** 25,000 kg
- **Authorities:** DNV, 1A1, HSLC R3 Crew
- **Delivered:** June 2012



Tlf: + 47 38 27 13 00 Fax: + 47 38 26 45 80

E-mail: [post@batservice.no](mailto:post@batservice.no)

[www.batservice.no](http://www.batservice.no)

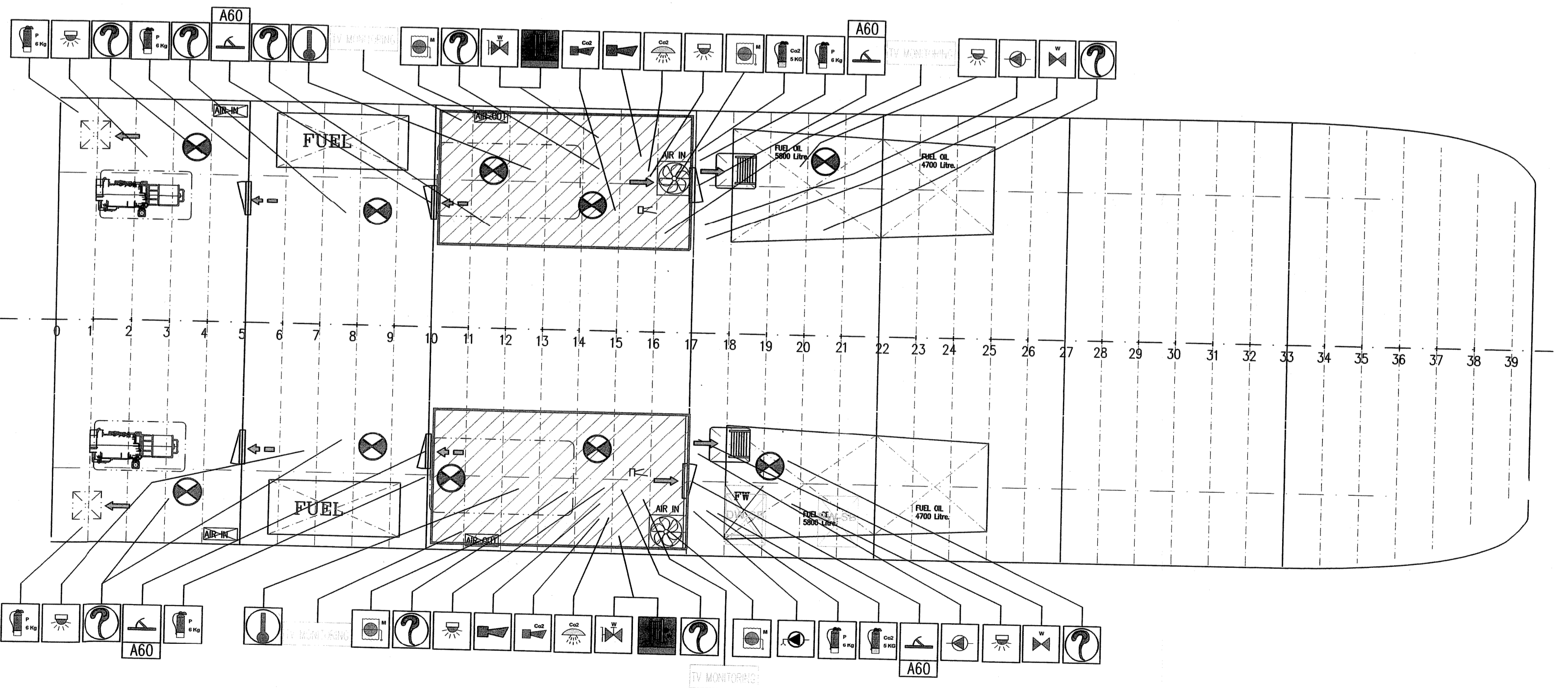
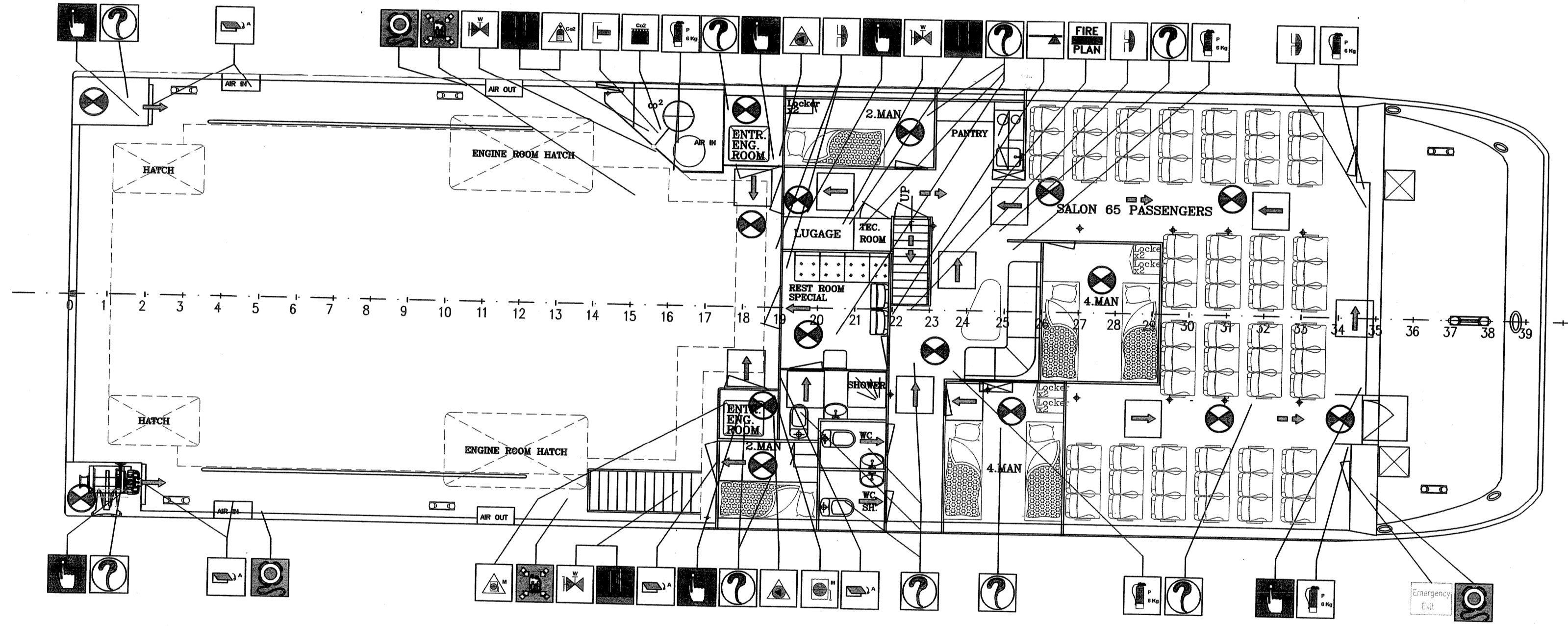
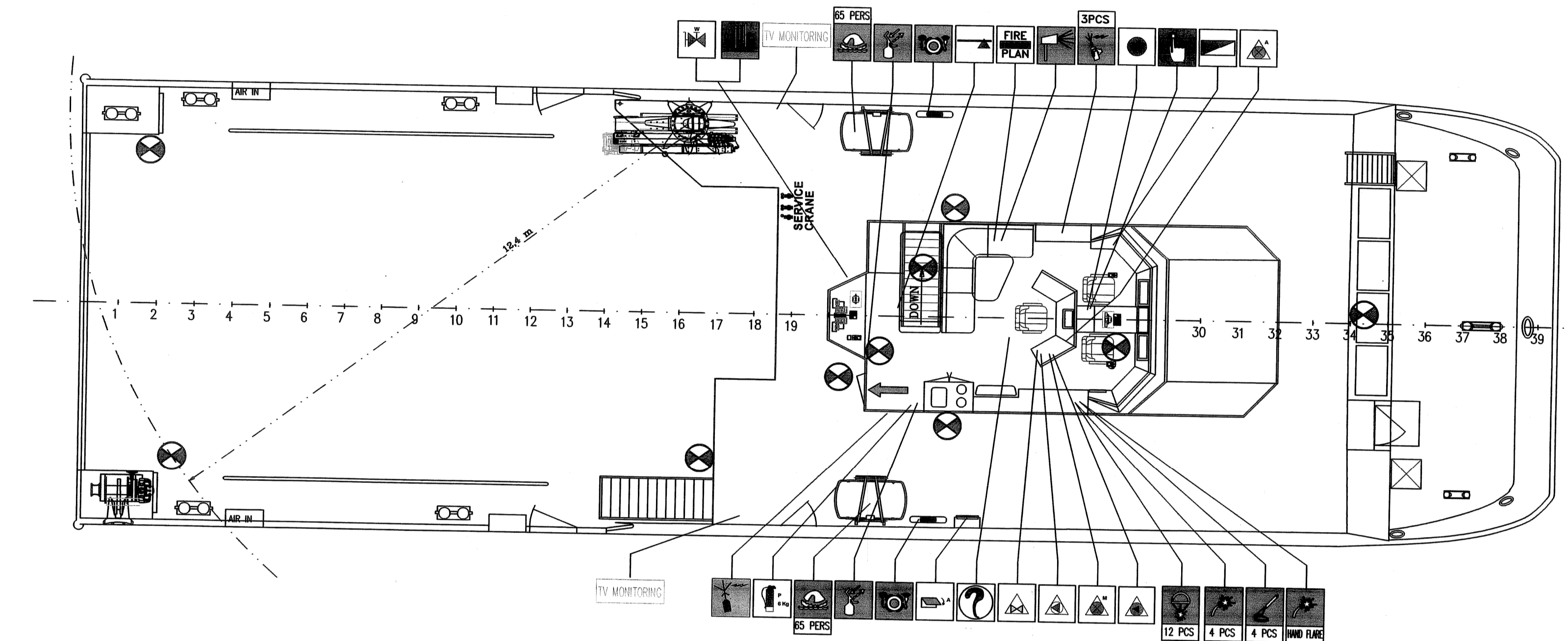
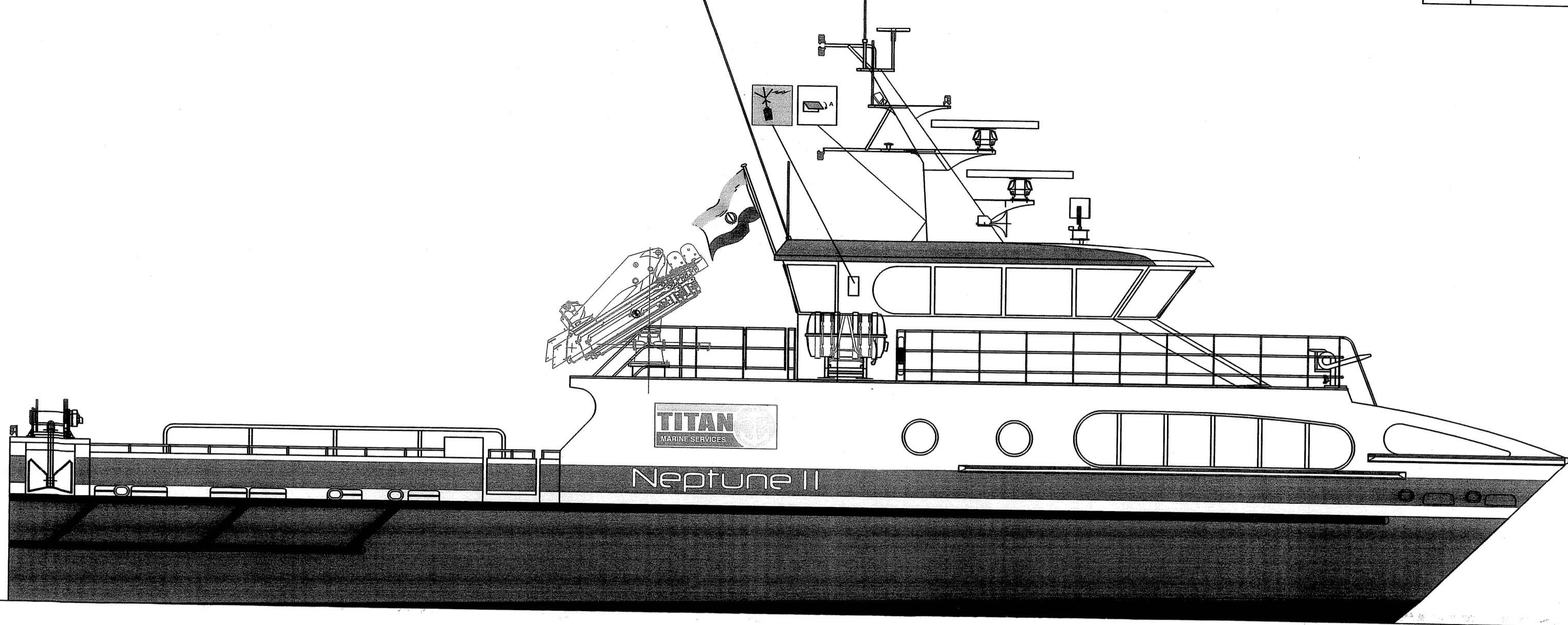


### SHORT SPECIFICATION FOR SEA LORD 30 M CREW/CARGO VESSEL

Buyer:	Far Sea Sun Asia	Diesel Cargo capacity:	20.000 L.
Designer:	Båtservice Mandal A/S	Diesel Fuel capacity:	6000 L.
Route:	Persian Gulf		
Delivered:	2012	Fresh water capacity	1000 L.
		Engines:	2 x 12VMTU2000 M72
Building material:	Aluminum Alloy	Gear:	ZF 3050
length		Propeller:	Mitchigan
Overall:	29,65 m	Steering engines:	Scana Mar-El ME-SG 23/xFU
Beam:	9,00 m	El-systems:	380V, 3PH, 50Hz-65kva x2
Draft:	1,80 m	Auxiliary engines:	2x John Deere 4045FM
		Bow Thruster:	Sleipner Motor AS SP300 HYD
Speed:	28 knots	Navigation:	Autopilot Gyrokompass Magnetic Compass NOR 250 2 X Radar El. Mar System
Seats:	65		
Crew:	3		
Deck cargo:	Approx 45.000 kg		
Cargo capacity:	10.000 liter	Communication:	GMDSS A1 + A2
Authorities:	DNV, 1A1, HSLC R3 Crew		

# FIRE & SAFETY PLAN

Rev.	Reason for issue.	Date	Drw.	Chk.	App.
A	FOR APPROVAL	28.09.11	GAR		



No.	DESCRIPTION	SYMBOL
1	EPIRB	1
2	LIFERAFT 65 pers.	
	MUSTER STATION	
2	LIFEBUOY WITH LIGHT AND SMOKE	
3	LIFEBUOY WITH LINE (30m)	
85	LIFEJACKET (65+12+10%=85)	
6	HAND FLARES	
4	PYROTECHNIC SMOKE SIGNALS	
12	ROCKET PARACHUTE FLARES	
4	LINE-THROWING APPLIANCE, WITH PROJECTILES/LINE	
3	3 OF PORTABLE VHF, GMDSS VHF	
2	RADAR TRANSPONDER	
1	DAYLIGHT SIGNALLING LAMP	
	PRIMARY ESCAPE ROUTE	
	SECONDARY MEANS OF ESCAPE	
1	CONTROL PANEL FOR FIRE	
1	GENERAL ALARM	
7	PUSH-BUTTON/SWITCH FOR FIRE ALARM	
2	FIRE CONTROL PLAN	
3	BELL FIRE ALARM	
2	HORN FIRE ALARM	
2	FIRE AXE	
12	PORTABLE EXTINGUISHERS POWD.6kg	
2	PORTABLE EXTINGUISHERS CO2 5kg	
2	HEAT DETECTOR	
24	SMOKE DETECTOR	
6	HOSE BOX WITH SPRAY/JET FOG NOZZLE	
6	FIRE MAIN WITH FIRE VALVE	
2	FIRE PUMP	
2	REMOTE CONTROLLED FIRE PUMPS	
1	INTERNATIONAL SHORE COUPLING	
6	FLASH LIGHT FIRE ALARM	
1	CARBON DIOXIDE BATTERY	
2	CARBON DIOXIDE RELEASE STATION	
2	SPACE PROTECTED BY CARBON DIOXIDE	
2	CO2 HORN	
2	A CLASS DIVISION STB/PORT ENGINE ROOM	
4	FIRE DOOR	
2	FIRE MAIN SECTION VALVE	
2	REMOTE CONTROLLED FUEL OIL VALVES	
4	FIRE DAMPER IN VENT DUCT, ENGINE	
2	REMOTE CONTROL VENTILATION SHUT-OFF ENGINE ROOM FAN	
4	REMOTE CONTROL FIRE DAMPER	
1	REMOTE CONTROL VENTILATION SHUT-OFF ACCOMMODATION	
6	CLOSING APPLIANCE FOR EXTERIOR, VENTILATION	
1	PORTABLE PUMP	
3	REMOTE CONTROLLED BILGE PUMP	
35	EMERGENCY LIGHT	
6	TV MONITORING	

**Call Sign: EPBC7**  
**MMSI no.: 422018600**  
**IMO number: IMO 9630286**

APPROVED  
 2011-09-20  
 DET NORSKE VERITAS  
 Kristiansand

**Båtservice Mandal as**  
 P.O. BOX 113, N-4501 MANDAL  
 NORWAY  
 TELEPHONE: +47 38 27 13 00  
 FAX: +47 38 28 45 80  
 E-MAIL: post@batservice.no

YARD No.: 94	DATE: 28.09.2011	CHECKED:	SCALE: N.T.S.
	DRAWN: GAR	Approved:	Format: A1
TITLE: FIRE- AND SAFETY PLAN			
DRAWING No.: 94-50-17982	ISSUE: A		