

30 m Crew Cargo Catamaran - NEPTUNE 1



1 of 2 Crew/Cargo 30m vessel to operate in the the Persian Gulf.

Specifications

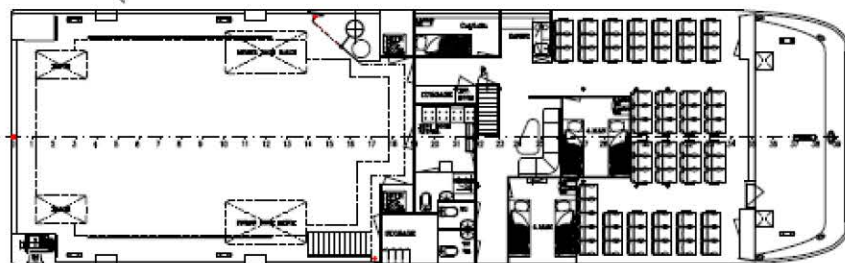
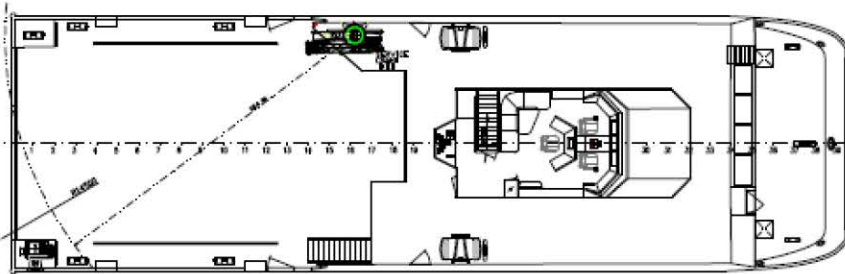
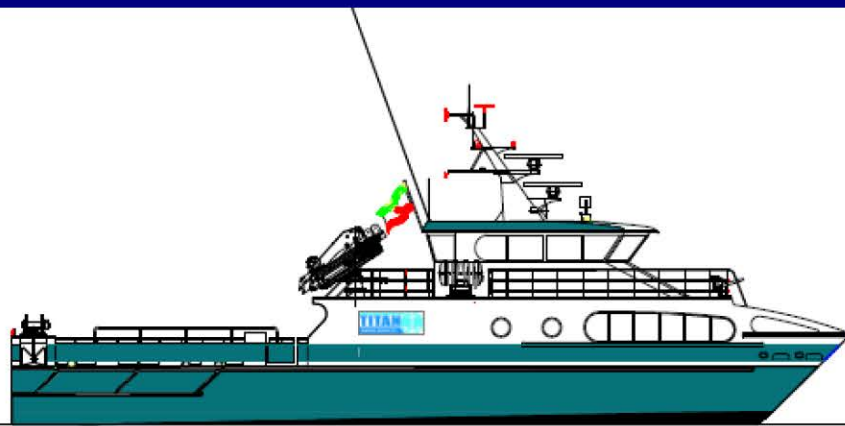
- **Type of vessel:** Crew Cargo Catamaran
- **Design:** Båtservice Mandal Verft AS - Ola Lilloe Olsen
- **Client:** Titan Marine Kish
- **Building material:** Aluminium Alloy
- **Lenght overall:** 29,65m
- **Breath:** Beam 9m
- **Draft:** 1,80m
- **Speed:** 30 knots
- **Fuel tank:** 6000L
- **Main engine:** 2 x 12V NTU 2000 M72
- **Yard No:** 93
- **Beam:** 9m
- **Crew:** 3
- **Seats:** 65
- **Communications:** GMDSS A1 + A2
- **El. System:** 380v, 3PH, 50Hz-65kva x 2
- **Aux.Engine:** 2 x John Deer 4045 FM 57 kW
- **Gear:** ZF 3050
- **Cargo:** 25,000 kg
- **Authorities:** DNV, 1A1, HSLC R3 Crew
- **Delivered:** 2011



Tlf: + 47 38 27 13 00 Fax: + 47 38 26 45 80

E-mail: post@batservice.no

www.batservice.no



SHORT SPECIFICATION FOR SEA LORD 30 M CREW/CARGO VESSEL

Buyer:	Titan Marine, Kish	Diesel Cargo capacity:	20.000 l.
Route:	Persian Gulf	Diesel/Fuel capacity:	6000 l.
Delivered:	September 2011	Fresh water capacity:	600 l.
		Hydraulic crane,	
		range 12,3 m.	SWL 1570 kg
		Engines:	2 x 12VMTU2000 M72
Building material:	Aluminum Alloy	Gear:	ZF 3050
Length overall:	29,65 m	Steering engines:	Scana Mar-EI ME-SG 23/xFU
Beam:	9,00 m	El-system:	380V, 3PH, 50Hz-65kva x2
Draft:	1,80 m	Auxiliary engines:	2x John Deere 4045FM 57 kW
Speed:	30 knots	Navigation:	Autopilot Gyrokompass Magnetic Compass 2x Radar El. Map System Ecco Sounder AIS – GPS - LOGG
Seats:	65	Communication:	GMDSS A1 + A2
Crew:	3		
Deck cargo:	Approx 25.000 kg		
Cargo			
Fresh water:	10.000 liter		
Authorities:	DNV, 1A1, HSLC R3 Crew		